



**A GIANT BY
YOUR SIDE.**

A GIANT BY YOUR SIDE

ANTEO

A brand of
PROMETEON



Every day is a big day: long distances to cover, tight deadlines, unexpected and demanding situations on and off the road.

That's why it is good to have an experienced ally to face the daily challenges with confidence and serenity.

ANTEO's product range is the expression of innovation, research and deep industry knowledge. The reliable partner to achieve your goals with.

**From
now on,
you have
a giant
by your
side.**



ANTEO

ANTEO

ON ROAD TRUCK



Pro-S

Designed for all season use on steer axles on long-distance and regional haul trucks. It offers great road holding, steering precision and grip in all conditions.



- Tread pattern designed to promote safety through wet and snow grip performance.
- The groove geometry design prevents stone trapping for maximum tearing resistance.
- Tread footprint optimized for optimum steering precision.

Pro-D

Designed for use on drive axles on long-distance and regional haul trucks in varying weather conditions. It offers a successful combination of traction and regular wear.



- Waved grooves, bumpers in the transversal grooves and tie-bar on the shoulders enhance traction and even wear.
- Functional sipes enhance wet and snow grip performance.
- Optimized tread block design promotes regular wear and tear resistance.

ON ROAD TRAILER



Pro-T

Designed for fitment on trailer axles, it ensures steady handling, lateral stability and great tearing resistance.



- Wide footprint area grants regular wear.
- Embedded bumpers enhance road holding in dry and wet conditions.
- Waved groove design optimizes stone ejection, ensures great resistance to lateral forces (stresses) and promotes trailer stability.

Pro-T II

Designed for fitment on trailer axles, it enhances superior handling, even wear throughout the whole tyre life, high mileage, and great tearing resistance.



- Embedded bumpers offer road holding in dry and wet conditions.
- Waved grooves design promotes even wear and ensures great resistance to lateral forces (stresses).
- Optimized tread pattern design enhances superior handling, mileage and trailer stability.



Size range

- 245/70 R 17.5
- 295/80 R 22.5
- 315/70 R 22.5
- 215/75 R 17.5
- 235/75 R 17.5
- 315/80 R 22.5

Size range

- 245/70 R 17.5
- 235/75 R 17.5
- 215/75 R 17.5

Size range

- 385/55 R 22.5
- 385/65 R 22.5

△ Allowed

ANTEO

ANTEO

ON-OFF ROAD

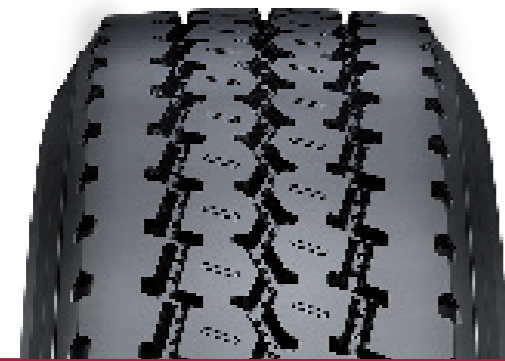


ON-OFF ROAD



Mover-S

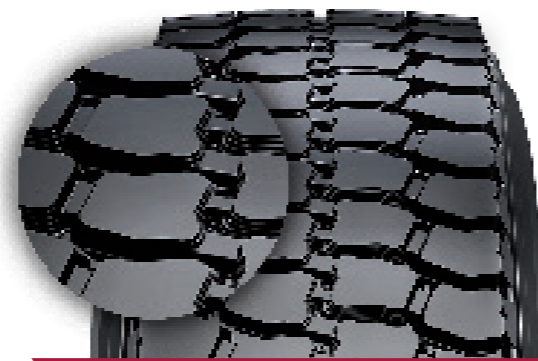
Designed for use on steer axles, it ensures resistance against tearing and lacerations, and offers grip in changing and severe driving conditions.



- Innovative groove design grants the tread pattern «self-cleaning» and excellent tear and cut resistance.
- Lateral cavities for optimum ventilation in the buttress area and limited heat generation for superior tyre life.
- Functional sipes enhance grip and wet braking distance.

Mover-D

Designed for use on drive axles, it meets the requirements on asphalted road driving as well as on rough, tough surface conditions. It safeguards robustness and tyre integrity.

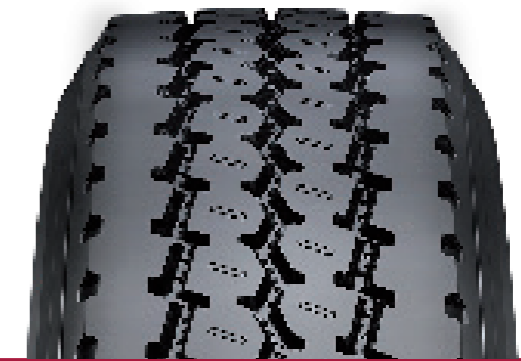


- Innovative tread pattern design maximizes traction in both on-road and off-road conditions.
- Optimized groove geometry grants an excellent tear resistance and low noise generation.
- Adaptable Tread Pattern Technology: the variable tread geometry during tyre life guarantees robustness and extended tyre life.

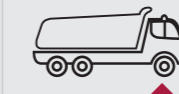


Mover-M

Designed for fitment of all axles, it offers long tread-life and high resistance both on-road and off-road in rough, tough conditions sets.



- The groove design guarantees cut resistance, easy cleaning and low noise generation for a comfortable ride.
- Special side lugs design for optimum ventilation in the buttress area and limited heat generation for long tyre life.
- Innovative tread pattern design with sipes on the ribs enhances grip and wet braking distance.



Size range

■ 315/80 R 22.5 ■ 13 R 22.5

Size range

■ 385/65 R 22.5

△ Allowed △ Also for use on front axles (all wheel drive vehicles)

ANTEO

ANTEO

URBAN



TECHNICAL DATA



Pro-M

Designed for fitment of all axles of city buses, it offers high efficiency and safety standards, and maximizes traction and grip even on wet and slippery surfaces.



- The innovative tread pattern design ensures **handling, traction and grip** on wet and slippery surfaces, and **reduces braking distance**.
- The new continuous profile of the sidewall provides **high resistance to friction**. Stone ejectors on lateral grooves **prevent casing damages** and enhance **retreadability**.
- Embedded bumpers protect the groove bottom enhancing **regular wear, acoustic comfort** and **low rolling resistance**.



Size range

■ 275/70 R 22.5

ANTEO

REGULATION EU 2020/740 - Label parameters

TREAD PATTERN	SIZE	LOAD INDEX / SPEED CODE	SECTION WIDTH (mm)	DIAMETER (mm)	STATIC RADIUS (mm)	ROLLING CIRC. (mm)	RIMS	MARKING	(1)	(2)	(3)		
PRO-S	215/75 R 17.5	126/124 M	216	768	360	2342	6.00-6.75	M+S	D	A	A	69 dB	✓
PRO-D	215/75 R 17.5	126/124 M	216	775	363	2364	6.00-6.75	M+S	D	B	A	69 dB	✓
PRO-T	215/75 R 17.5	135/133 J	216	773	354	2358	6.00-6.75	M+S/FRT	C	B	B	69 dB	✓
PRO-S	235/75 R 17.5	132/130 M	236	802	374	2446	6.75-7.50	M+S	D	A	A	69 dB	✓
PRO-D	235/75 R 17.5	132/130 M	236	804	375	2452	6.75-7.50	M+S	E	A	A	73 dB	✓
PRO-T	235/75 R 17.5	143/141 J (144/144 F)	240	795	362	2425	6.75-7.50	M+S/FRT	D	A	A	70 dB	✓
PRO-S	245/70 R 17.5	136/134 M	244	804	371	2452	6.75-7.50	M+S	D	A	A	69 dB	✓
PRO-D	245/70 R 17.5	136/134 M	244	808	372	2464	6.75-7.50	M+S	E	B	A	73 dB	✓
PRO-T	245/70 R 17.5	143/141 J (146/146 F)	252	796	363	2428	6.75-7.50	M+S/FRT	D	A	A	69 dB	✓
PRO-S	295/80 R 22.5	154/149 M	306	1050	489	3203	8.25-9.00	M+S	C	B	A	71 dB	✓
PRO-D	295/80 R 22.5	152/148 M	306	1056	491	3219	8.25-9.00	M+S	D	B	B	74 dB	✓
PRO-S	315/70 R 22.5	156/150 L (154/150 M)	315	1003	464	3059	9.00-9.75	M+S	C	A	A	68 dB	✓
PRO-D	315/70 R 22.5	154/150 L (152/148 M)	315	1012	468	3087	9.00-9.75	M+S	D	A	B	74 dB	✓
PRO-S	315/80 R 22.5	156/150 L (154/150 M)	316	1070	498	3264	9.00-9.75	M+S	C	B	A	69 dB	✓
PRO-D	315/80 R 22.5	156/150 L (154/150 M)	316	1078	501	3288	9.00-9.75	M+S	D	B	B	72 dB	✓
PRO-T II	385/55 R 22.5	160 K	379	995	455	3035	11.75-12.25	M+S/FRT	C	A	A	69 dB	✓
PRO-T II	385/65 R 22.5	164 K (158 L)	381	1068	485	3237	11.75-12.25	M+S/FRT	C	A	A	69 dB	✓

ON ROAD

URBAN

ON-OFF ROAD

PRO-M	275/70 R 22.5	150/148 J (152/148 E)	285	965	453	2943	7.50-8.25	M+S	C	B	A	71 dB	✓
-------	---------------	-----------------------	-----	-----	-----	------	-----------	-----	---	---	---	-------	---

MOVER-S	13 R 22.5	156/150 K (154/150 L)	316	1117	518	3407	9.00-9.75	M+S	D	A	A	71 dB	✓
MOVER-D	13 R 22.5	156/150 K (154/150 L)	316	1121	519	3419	9.00-9.75	M+S	D	A	B	74 dB	✓
MOVER-S	315/80 R 22.5	156/150 K	316	1076	500	3282	9.00-9.75	M+S	C	A	B	72 dB	✓
MOVER-D	315/80 R 22.5	156/150 K	316	1080	502	3294	9.00-9.75	M+S	D	A	B	74 dB	✓
MOVER-M	385/65 R 22.5	160 K (158 L)	381	1068	485	3257	11.75-12.25	M+S	C	A	A	71 dB	✓

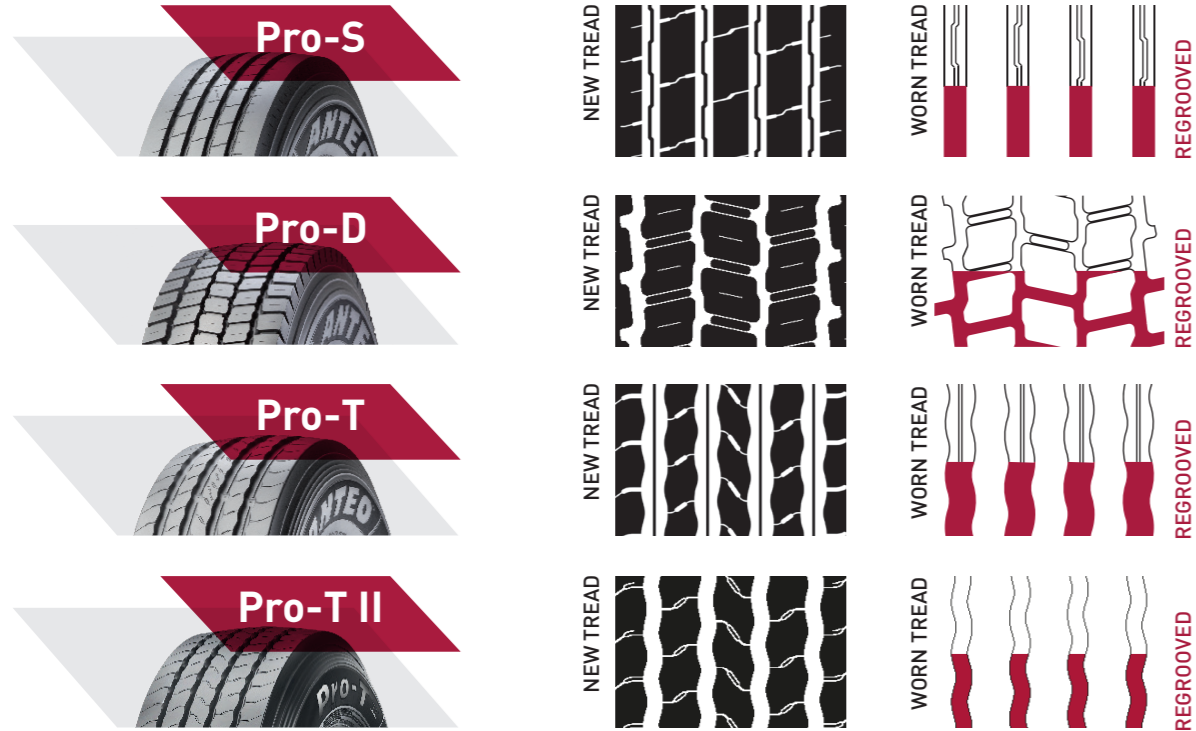
(1) Fuel efficiency class (2) Wet grip class (3) External rolling noise class Snow grip / 3PMSF marking Rim underlined is measuring rim

ANTEO

REGROOVING

P. MAX = 2mm — W. MAX = 8mm

ON ROAD

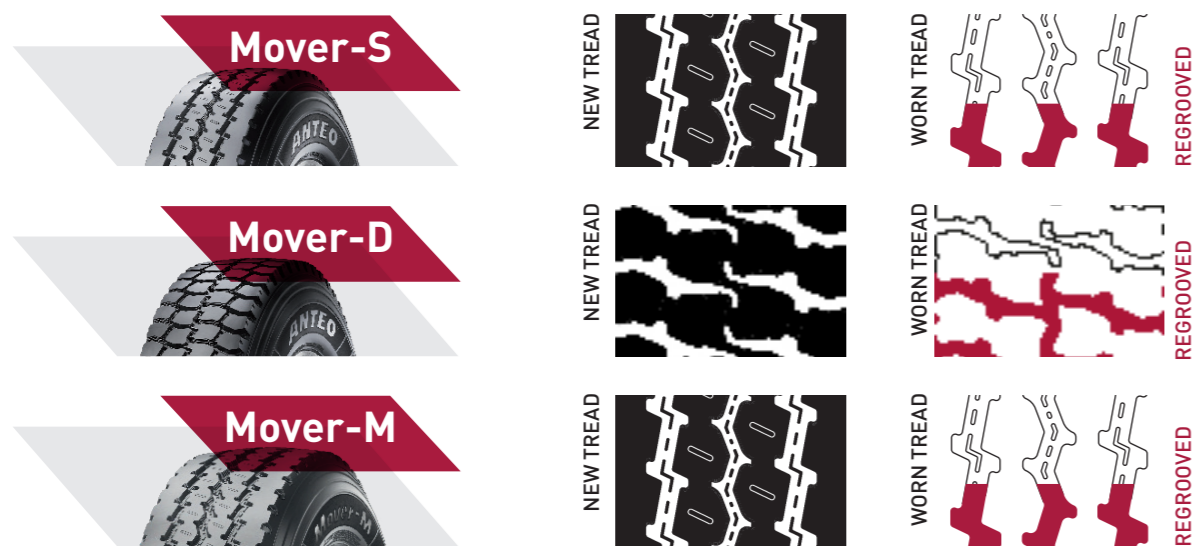


URBAN



P. MAX = 2mm — W. MAX = 8mm

ON-OFF ROAD



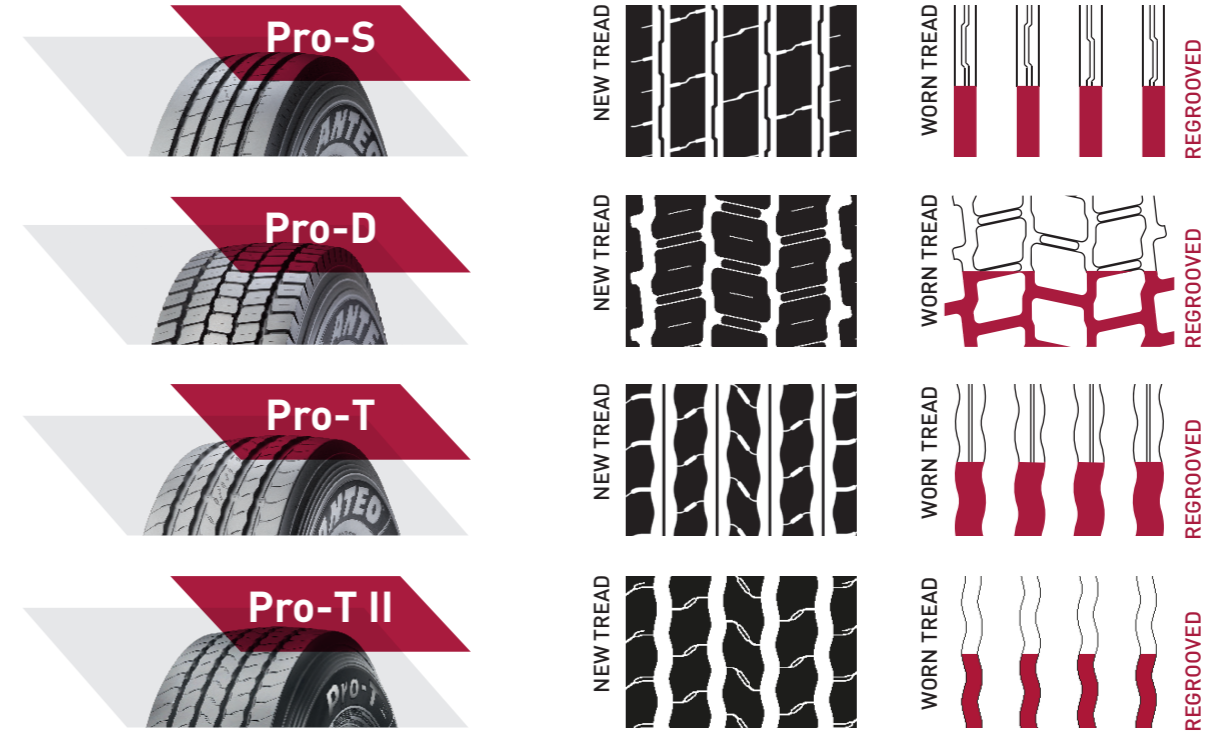
W. MAX: Maximum regrooving width - P. MAX: Maximum regrooving depth.

ANTEO

REGROOVING

P. MAX = 2mm — W. MAX = 8mm

ON ROAD

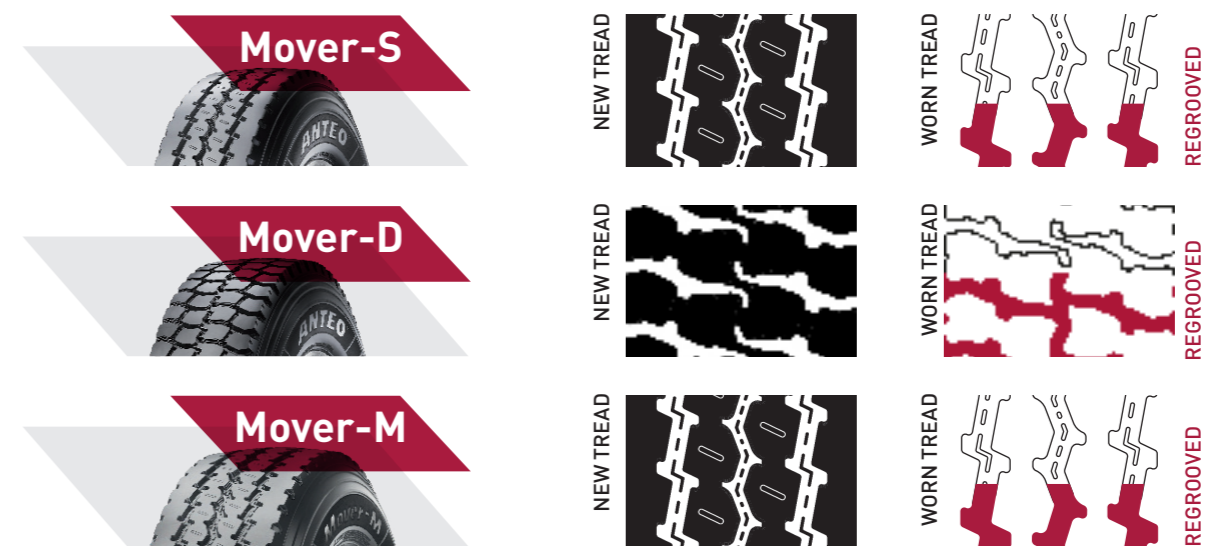


URBAN



P. MAX = 2mm — W. MAX = 8mm

ON-OFF ROAD



W. MAX: Maximum regrooving width - P. MAX: Maximum regrooving depth.

ANTEO

