



FORMULA™

Tyres for road leaders

FORMULA™

FORMULA™ has a goal: **move your business smartly.**

Thanks to its **experience** and **expertise**,
FORMULA™ is **versatile** and **reliable**
and it's always by your side to support you
on your way, guaranteeing **high performance**
in every situation and every condition,
offering **tyres made especially for road leaders.**

RANGE OVERVIEW

ON ROAD APPLICATION

ON-OFF APPLICATION



STEER MULTIAXLE



235/75 R 17.5



315/80 R 22.5 12 R 22.5 / 13 R 22.5 385/65 R 22.5

DRIVE



235/75 R 17.5



TRAILER



R 17.5"

R 22.5"



FORMULA ON ROAD APPLICATION

STEER

Steering precision and control.

Driving precision, control and safety even in critical conditions thanks to the presence of four straight longitudinal grooves.

The dense siping on the ribs prevents irregular wear. The optimized tread pattern geometry promotes braking distances and enhances lateral grip.



235/75 R 17.5

RECOMMENDED POSITION



REGULATION EU 2020/740 - Label parameters

SIZE	LOAD INDEX / SPEED CODE	SECTION WIDTH (mm)	DIAMETER (mm)	STATIC RADIUS (mm)	ROLLING CIRC. (mm)	RIMS	MARKING	(1)	(2)	(3)	XY dB	ABC	SNOW
215/75 R 17.5	126/124 M	216	772	316	2355	<u>6.00</u> -6.75	M+S	E	B	B	73 dB	√	
235/75 R 17.5	132/130 M	236	808	377	2464	<u>6.75</u> -7.50	M+S	E	C	B	73 dB	√	
295/80 R 22.5	154/149 M	298	1055	491	3218	<u>8.25</u> -9.00	M+S	C	B	A	71 dB	√	
315/70 R 22.5	156/150 L (154/150 M)	315	1008	466	3074	<u>9.00</u> -9.75	M+S	D	A	A	68 dB	√	
315/80 R 22.5	156/150 L (154/150 M)	315	1076	500	3282	<u>9.00</u> -9.75	M+S	C	B	B	71 dB	√	

DRIVE

Extraordinary grip and traction in all conditions.

Whether on wet or dry roads, the directional* tread pattern enhances performance under any conditions.

The specific roll direction reduces noise, and deep blocks guarantee better grip for the entire tyre life.



235/75 R 17.5

RECOMMENDED POSITION



SIZE	LOAD INDEX / SPEED CODE	SECTION WIDTH (mm)	DIAMETER (mm)	STATIC RADIUS (mm)	ROLLING CIRC. (mm)	RIMS	MARKING	REGULATION EU 2020/740 - Label parameters				
								(1)	(2)	(3)	XY dB	ABC
215/75 R 17.5	126/124 M	216	772	316	2355	<u>6.00</u> -6.75	M+S	E	B	B	75 dB	✓
235/75 R 17.5	132/130 M	236	808	377	2464	<u>6.75</u> -7.50	M+S	E	C	B	73 dB	✓
295/80 R 22.5	152/148 M	298	1055	491	3218	<u>8.25</u> -9.00	M+S	D	B	B	74 dB	✓
315/70 R 22.5	154/150 L (152/148 M)	315	1008	466	3074	<u>9.00</u> -9.75	M+S	D	B	B	75 dB	✓
315/80 R 22.5	156/150 L (154/150 M)	315	1076	500	3282	<u>9.00</u> -9.75	M+S	D	B	B	74 dB	✓

(1) Fuel efficiency class (2) Wet grip class (3) External rolling noise class Snow grip / 3PMSF marking Rim underlined is measuring rim

TRAILER

Road control and efficient rear-vehicle management.

17.5"

Robust zig-zag grooves shape ensures excellent road-holding under any condition and prevents stone trapping.

22.5"

The four longitudinal zig-zag grooves guarantee an optimal transverse grip and excellent braking performance. The sturdy beads are designed to withstand the severe transverse stress typical of this type of use.



17.5"

22.5"

RECOMMENDED POSITION



SIZE	LOAD INDEX / SPEED CODE	SECTION WIDTH (mm)	DIAMETER (mm)	STATIC RADIUS (mm)	ROLLING CIRC. (mm)	RIMS	MARKING	REGULATION EU 2020/740 - Label parameters				
								(1)	(2)	(3)	XY dB	ABC
215/75 R 17.5	135/133 J	216	775	354	2364	<u>6.00</u> -6.75	M+S/FRT	C	B	B	72 dB	✓
235/75 R 17.5	143/141 J (144/144 F)	240	800	364	2440	<u>6.75</u> -7.50	M+S/FRT	C	B	B	72 dB	✓
245/70 R 17.5	143/141 J (146/146 F)	240	800	364	2440	<u>6.75</u> -7.50	M+S/FRT	D	B	A	70 dB	✓
385/55 R 22.5	160 K	379	996	456	3038	<u>11.75</u> -12.25	M+S/FRT	C	A	A	70 dB	✓
385/65 R 22.5	160 K (158 L)	376	1067	494	3233	<u>11.75</u> -12.25	M+S/FRT	C	A	B	72 dB	✓

FRT Marking: Free Rolling Tyre

(1) Fuel efficiency class (2) Wet grip class (3) External rolling noise class Snow grip / 3PMSF marking Rim underlined is measuring rim

ON-OFF STEER

**Great sturdiness
even on gravel terrain.**

Longitudinal zig-zag grooves shape and wide transversal shoulder grooves enhance grip on slippery surfaces.

Optimized geometry tread pattern promotes laceration resistance.



12 R 22.5; 13 R 22.5

RECOMMENDED POSITION



▲ Allowed

SIZE	LOAD INDEX / SPEED CODE	SECTION WIDTH (mm)	DIAMETER (mm)	STATIC RADIUS (mm)	ROLLING CIRC. (mm)	RIMS	MARKING	REGULATION EU 2020/740 - Label parameters				
								(1)	(2)	(3)	XY dB	▲
12 R 22.5	152/148 L	288	1091	507	3328	<u>8.25-9.00</u>	M+S	D	B	B	71 dB	✓
13 R 22.5	156/150 K (154/150 L)	318	1122	520	3422	<u>9.00-9.75</u>	M+S	D	B	B	71 dB	✓
315/80 R 22.5	156/150 K	314	1078	501	3288	<u>9.00-9.75</u>	M+S	D	B	B	72 dB	✓

(1) Fuel efficiency class

(2) Wet grip class

(3) External rolling noise class



Snow grip / 3PMSF marking

Rim underlined is measuring rim

ON-OFF DRIVE

**High resistance even
on gravel terrain.**

Wide and deep transversal grooves enhance road holding and traction.

Robust shoulder blocks and thickness of the central rib provide resistance against lacerations.



RECOMMENDED POSITION



▲ Also for use on front axles (all wheel drive vehicles)

SIZE	LOAD INDEX / SPEED CODE	SECTION WIDTH (mm)	DIAMETER (mm)	STATIC RADIUS (mm)	ROLLING CIRC. (mm)	RIMS	MARKING	REGULATION EU 2020/740 - Label parameters				
								(1)	(2)	(3)	XY dB	▲
13 R 22.5	156/150 K	318	1124	521	3429	<u>9.00-9.75</u>	M+S/POR					
315/80 R 22.5	156/150 K	314	1078	501	3288	<u>9.00-9.75</u>	M+S/POR					

POR: Professional Off Road Tyres, out of the scope of EC regulation 740/2020.

(1) Fuel efficiency class

(2) Wet grip class

(3) External rolling noise class



Snow grip / 3PMSF marking

Rim underlined is measuring rim

FORMULA
ON-OFF APPLICATION

ON-OFF MULTIAXLE

**Superior tyre integrity and longevity
in changing and challenging conditions.**

New tread pattern design with side lugs and sipes on the ribs designed to maximize wet grip and traction even on snowy surfaces.

Three longitudinal, zig-zag shape grooves enhance traction in all conditions, low noise generation and easy cleaning. The stone ejectors safeguard casing and retreadability.



RECOMMENDED POSITION



SIZE	LOAD INDEX / SPEED CODE	SECTION WIDTH (mm)	DIAMETER (mm)	STATIC RADIUS (mm)	ROLLING CIRC. (mm)	RIMS	MARKING	REGULATION EU 2020/740 - Label parameters							
								(1)	(2)	(3)	XY dB	ABC	Symbol		
385/65 R 22.5	160 K (158 L)	377	1073	513	3273	11.75-12.25	M+S	C	A	B	71 dB	✓			

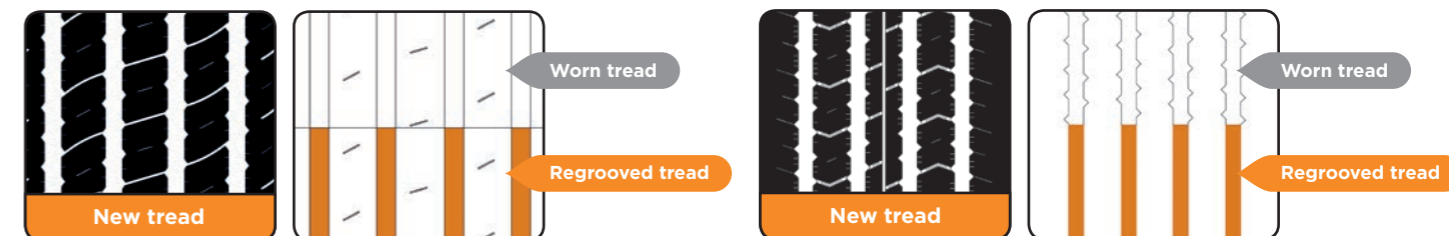
(1) Fuel efficiency class (2) Wet grip class (3) External rolling noise class

Snow grip / 3PMSF marking

Rim underlined is measuring rim

REGROOVING INDICATIONS W.MAX = 8

STEER P.Max 2 mm



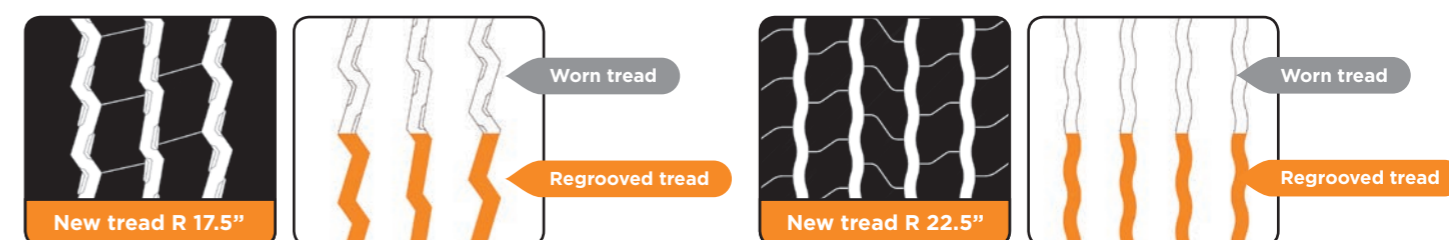
Valid only for 235/75 R 17.5

DRIVE P.Max 2 mm



Valid only for 235/75 R 17.5

TRAILER P.Max 2 mm



ON-OFF STEER P.Max 2.5 mm



Valid only for 315/80 R 22.5

ON-OFF DRIVE P.Max 2.5 mm



ON-OFF MULTIAXLE P.Max 2.5 mm

P. Max: Maximum regrooving depth. W. Max: Maximum regrooving width.

